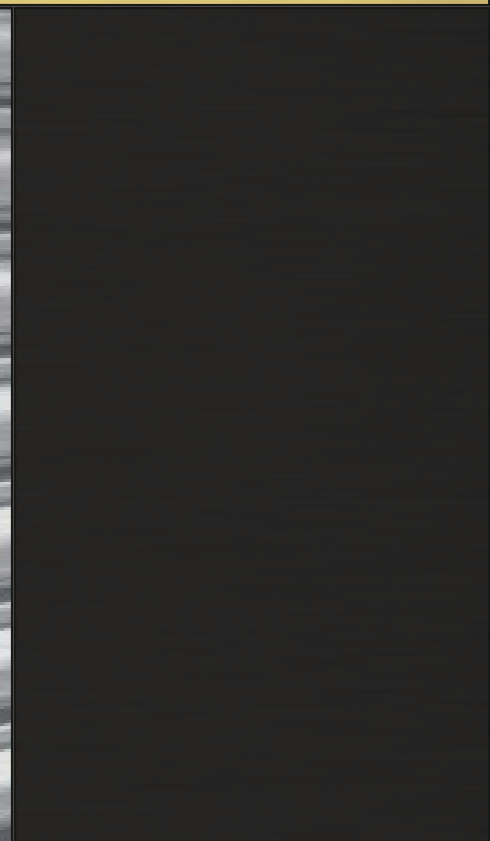


 **BIOROL** **S.A.**

EN

Antitebesta - B 42
Specifications and Accessories



Issued: 02-2015



**Antitebesta
B42**

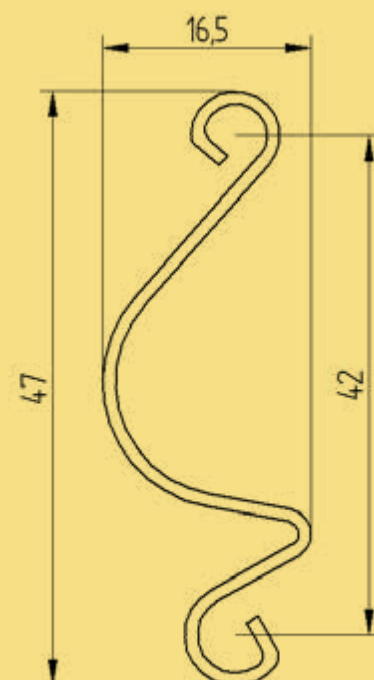


Antitebesta B42



1. Antitebesta B42 - Specifications

Profile	Blind	Perforated
Height/ Step - mm	42	42
Pcs /m	23,8	23,8
Thickness - mm	0,5	0,5
Weight kg/m ²	7,62	8,45
Maximum Production Length - Galvanized	4000	4000
Maximum Production Length - Powder Coated ¹	4000	4000
Safe Operation	-	-
Operating Forces	-	-
Min. Shaft Diameter	Ø80	-
Windows/ Ventilation Grills	-	-
Polyurethane Density	-	-
Sound Reduction ²	-	-
Thermal Transmittance ³	-	-



Certification according to :
EN 13241-1:2003+A1:2011



BIOROL S.A.

* Actual colors may differ

Plastic slide blockers for B42 profile

Plastic slide blockers that are placed in both ends of every other profile of the shutter.

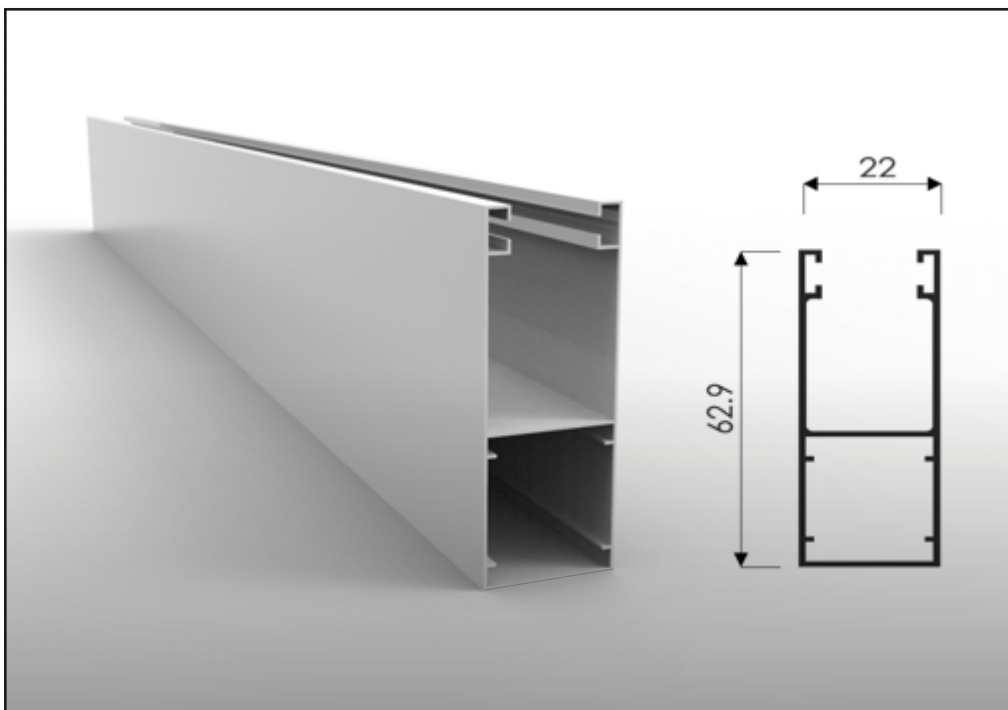
Art. Code: TL42



Guide

Aluminum Guide.

Art. Code: 9076



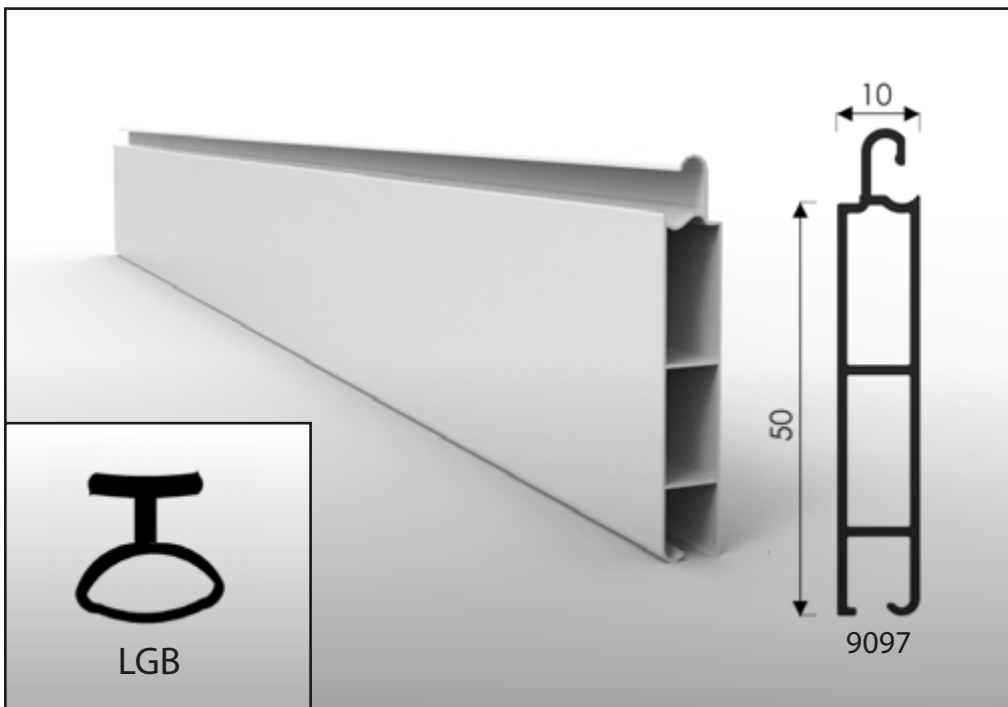
End Aluminum Profile for B42

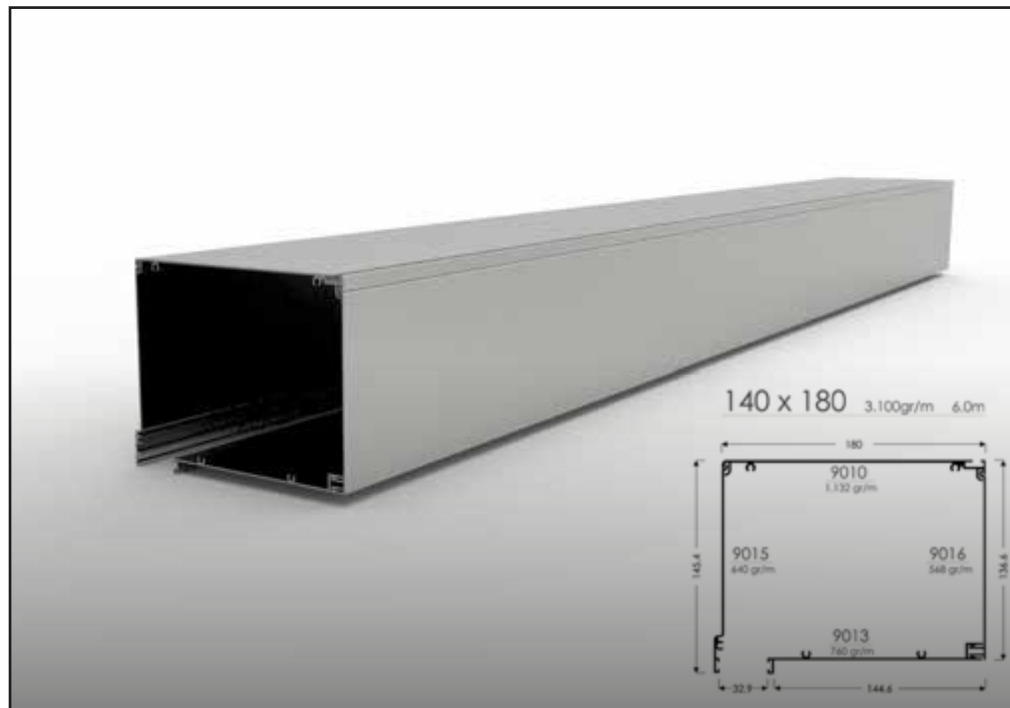
Bottom aluminum profile for B42 profile.

Art. Code: 9097

End Rubber for B42

Art. Code: LGB





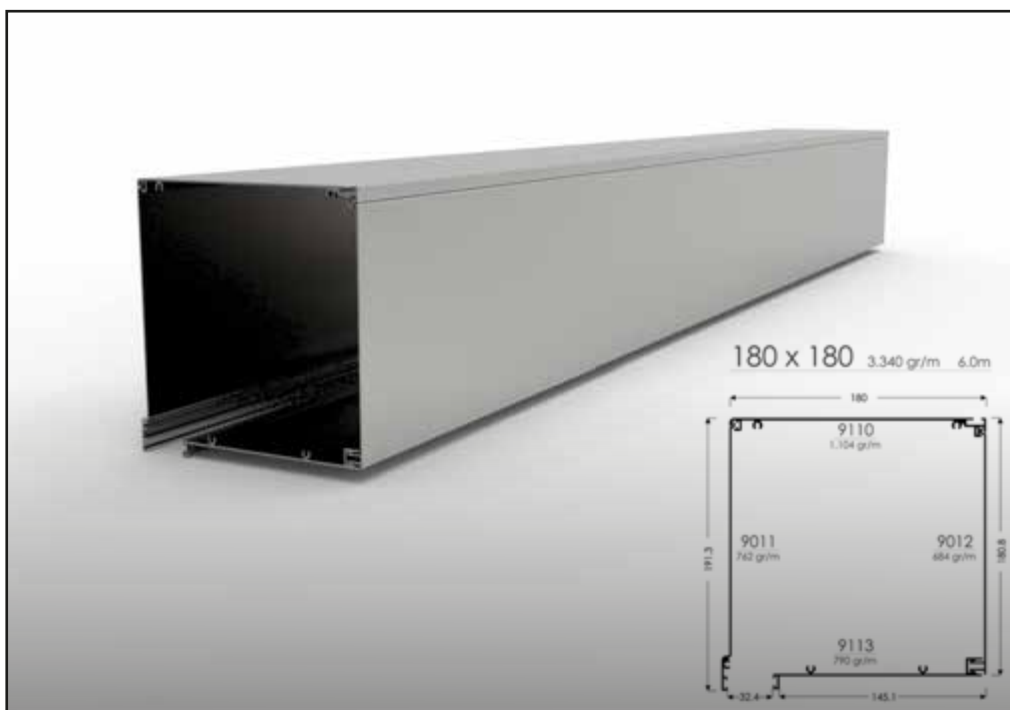
Accessories for box 140x180

Aluminum box that
covers the shaft and the
motor.

Length: 6m/pc

Art. Code: 9015
9010
9016
9013

Side Cover: RL1418



Box 180x180

Aluminum box that
covers the shaft and the
motor.

Length: 6m/pc

Art. Code: 9011
9110
9012
9113

Side Cover: RL1818



Box 210x210

Aluminum box that
covers the shaft and the
motor.

Length: 6m/pc

Art. Code: 9024
9025
9027
9028

Side Cover: RL2121.1

Shaft

Octagonal Shaft for
rolling shutters.

ø40x0,5

ø60x0,8

ø70x1,2

Art. Code: SHA005
 SHA006
 SHA007



Cup Plastic

Plastic Cups for the
shaft.

ø40

ø60

Art. Code: KOY-001
 KOY-002

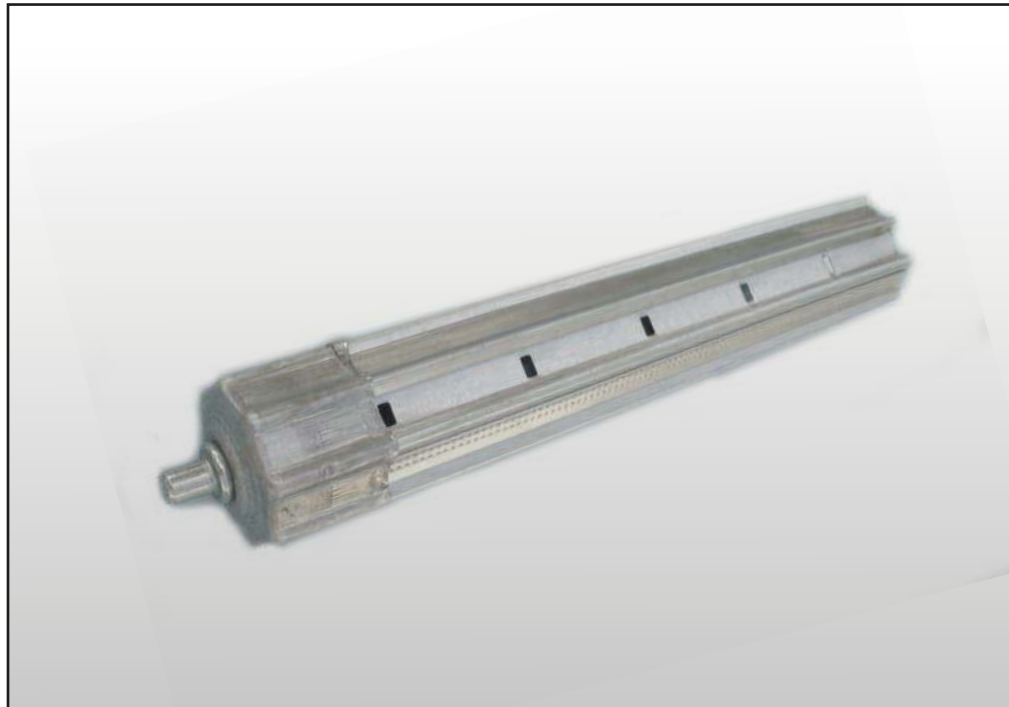


Bearing

Bearing for plastic cup.

Art. Code: B-001





Cup Metallic

Metallic Cups for the shaft.

ø60

ø70

Art. Code: KOY-010
KOY-007



Bearing

Bearing for metallic cup.

Art. Code: B-004
B-005



Base Ω

Base for bearings.

Art. Code: BAS-006

Cable for Bar

Cable that connects the bar with the shaft.

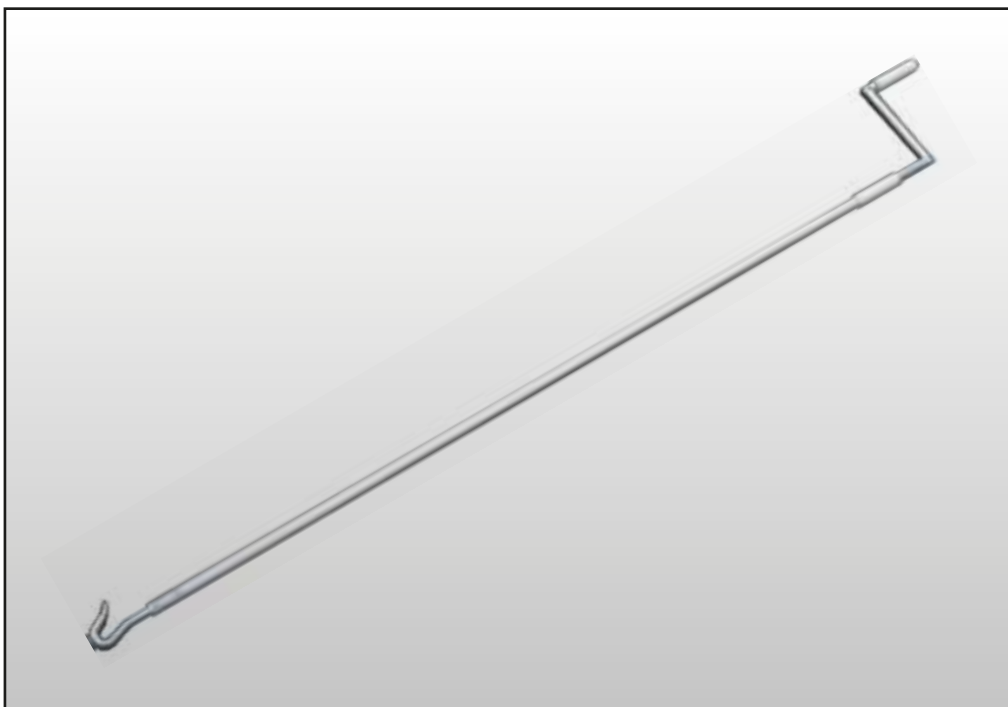
Art. Code: 162823



Jointed Bar

Bar that is used to manually operate the shutter.

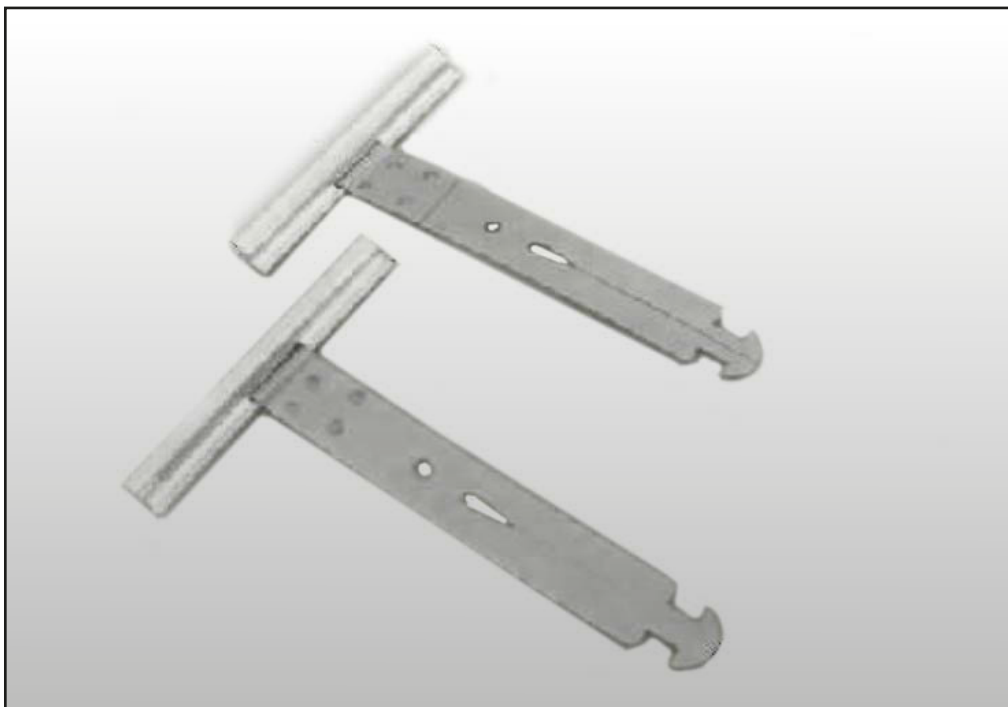
Art. Code:162736



Strap

Strap that connects the shutter with the shaft.

Art. Code: STR-0024



Color Palette

Color Palette

Wide range of powder coating colours (AKZO NOBEL) with excellent resistance to outdoor conditions and excellent colour retention that meets the requirements of all major European architectural standards BS EN 12206:2004 PART I, QUALICOAT CLASS I and GSB.

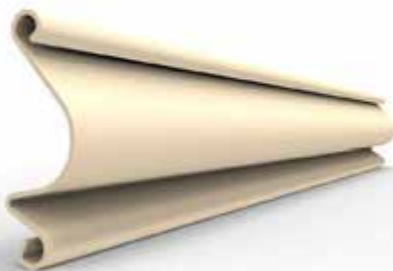
*Color palette is for reference only. Actual colors may differ.

** More colors available on request.

RAL-1013



RAL-1015



RAL-1021



RAL-2004



RAL-3000



RAL-3004



RAL-5002



RAL-5010



RAL-5012



RAL-6001



RAL-6005



RAL-6009



RAL-7001



RAL-7011



RAL-7015



RAL-7035



RAL-7038



RAL-8003



RAL-8014



RAL-8017



RAL-8024



RAL-9002



RAL-9005



RAL-9006



RAL-9007



RAL-9016



Galvanized



 **BIOROL** *S.A.*